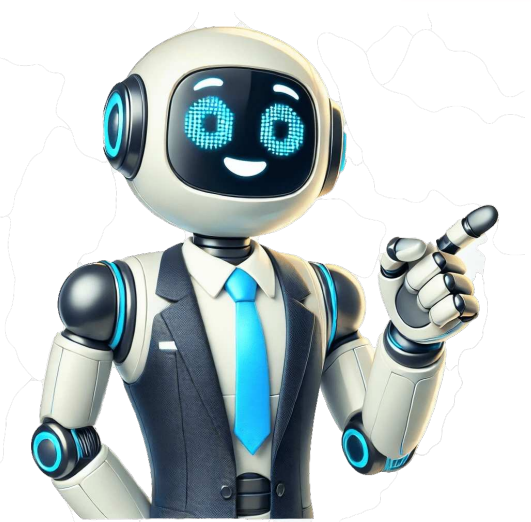


Click to prove
you're human



P0440 is a common trouble code that many Jeep Wrangler owners may encounter, indicating that there is an issue with the vehicle's Evaporative Emission Control (EVAP) system. Specifically, the EVAP system is malfunctioning. A variety of causes can trigger the P0440 code, with the most common being a loose or damaged fuel tank filler cap. P0440 is normally not an immediate threat to the drivability of your Wrangler. Certainly, anytime the service engine soon light is on; it's good to deal with it as soon as possible though. Table of Contents

Evaporative Emission Control System - Malfunction P0440 is a generic code, which means it has the same definition for the Jeep Wrangler as it would any other vehicle made after the 1996 model year. A loose or bad gas cap is the first thing you should check if your Wrangler has P0440. The EVAP system is designed to capture, store, and recycle fuel vapors from the fuel tank and delivery system, preventing them from being released into the atmosphere. Essential components of the system include fuel vapor hoses, a charcoal canister for fuel vapor storage, and computer-controlled purge and vent valves. The EVAP system should not affect the way your Wrangler's engine runs whatsoever. When the Wrangler's onboard diagnostics system (OBD-II) detects a fault in the EVAP system via a vacuum test, it generates the P0440 code. This code is a general indication of a malfunction in the EVAP system and does not pinpoint the specific problem. It is common for another code from the P044X series to accompany the P0440 code, which can help provide further information on the issue. If that's the case for your Wrangler, you may want to start your diagnosis with one of the other codes. Here are some of the common ones: P0441, P0442, P0443, P0444, P0445, P0446, P0447, P0448, P0449, P0450, P0451, P0452, P0453, P0454, P0455, P0456, P0457, P0458, P0459, P0460, P0461, P0462, P0463, P0464, P0465, P0466, P0467, P0468, P0469, P0470, P0471, P0472, P0473, P0474, P0475, P0476, P0477, P0478, P0479, P0480, P0481, P0482, P0483, P0484, P0485, P0486, P0487, P0488, P0489, P0490, P0491, P0492, P0493, P0494, P0495, P0496, P0497, P0498, P0499, P0500, P0501, P0502, P0503, P0504, P0505, P0506, P0507, P0508, P0509, P0510, P0511, P0512, P0513, P0514, P0515, P0516, P0517, P0518, P0519, P0520, P0521, P0522, P0523, P0524, P0525, P0526, P0527, P0528, P0529, P0530, P0531, P0532, P0533, P0534, P0535, P0536, P0537, P0538, P0539, P0540, P0541, P0542, P0543, P0544, P0545, P0546, P0547, P0548, P0549, P0550, P0551, P0552, P0553, P0554, P0555, P0556, P0557, P0558, P0559, P0560, P0561, P0562, P0563, P0564, P0565, P0566, P0567, P0568, P0569, P0570, P0571, P0572, P0573, P0574, P0575, P0576, P0577, P0578, P0579, P0580, P0581, P0582, P0583, P0584, P0585, P0586, P0587, P0588, P0589, P0590, P0591, P0592, P0593, P0594, P0595, P0596, P0597, P0598, P0599, P0600, P0601, P0602, P0603, P0604, P0605, P0606, P0607, P0608, P0609, P0610, P0611, P0612, P0613, P0614, P0615, P0616, P0617, P0618, P0619, P0620, P0621, P0622, P0623, P0624, P0625, P0626, P0627, P0628, P0629, P0630, P0631, P0632, P0633, P0634, P0635, P0636, P0637, P0638, P0639, P0640, P0641, P0642, P0643, P0644, P0645, P0646, P0647, P0648, P0649, P0650, P0651, P0652, P0653, P0654, P0655, P0656, P0657, P0658, P0659, P0660, P0661, P0662, P0663, P0664, P0665, P0666, P0667, P0668, P0669, P0670, P0671, P0672, P0673, P0674, P0675, P0676, P0677, P0678, P0679, P0680, P0681, P0682, P0683, P0684, P0685, P0686, P0687, P0688, P0689, P0690, P0691, P0692, P0693, P0694, P0695, P0696, P0697, P0698, P0699, P0700, P0701, P0702, P0703, P0704, P0705, P0706, P0707, P0708, P0709, P0710, P0711, P0712, P0713, P0714, P0715, P0716, P0717, P0718, P0719, P0720, P0721, P0722, P0723, P0724, P0725, P0726, P0727, P0728, P0729, P0730, P0731, P0732, P0733, P0734, P0735, P0736, P0737, P0738, P0739, P0740, P0741, P0742, P0743, P0744, P0745, P0746, P0747, P0748, P0749, P0750, P0751, P0752, P0753, P0754, P0755, P0756, P0757, P0758, P0759, P0760, P0761, P0762, P0763, P0764, P0765, P0766, P0767, P0768, P0769, P0770, P0771, P0772, P0773, P0774, P0775, P0776, P0777, P0778, P0779, P0780, P0781, P0782, P0783, P0784, P0785, P0786, P0787, P0788, P0789, P0790, P0791, P0792, P0793, P0794, P0795, P0796, P0797, P0798, P0799, P0800, P0801, P0802, P0803, P0804, P0805, P0806, P0807, P0808, P0809, P0810, P0811, P0812, P0813, P0814, P0815, P0816, P0817, P0818, P0819, P0820, P0821, P0822, P0823, P0824, P0825, P0826, P0827, P0828, P0829, P0830, P0831, P0832, P0833, P0834, P0835, P0836, P0837, P0838, P0839, P0840, P0841, P0842, P0843, P0844, P0845, P0846, P0847, P0848, P0849, P0850, P0851, P0852, P0853, P0854, P0855, P0856, P0857, P0858, P0859, P0860, P0861, P0862, P0863, P0864, P0865, P0866, P0867, P0868, P0869, P0870, P0871, P0872, P0873, P0874, P0875, P0876, P0877, P0878, P0879, P0880, P0881, P0882, P0883, P0884, P0885, P0886, P0887, P0888, P0889, P0890, P0891, P0892, P0893, P0894, P0895, P0896, P0897, P0898, P0899, P0900, P0901, P0902, P0903, P0904, P0905, P0906, P0907, P0908, P0909, P0910, P0911, P0912, P0913, P0914, P0915, P0916, P0917, P0918, P0919, P0920, P0921, P0922, P0923, P0924, P0925, P0926, P0927, P0928, P0929, P0930, P0931, P0932, P0933, P0934, P0935, P0936, P0937, P0938, P0939, P0940, P0941, P0942, P0943, P0944, P0945, P0946, P0947, P0948, P0949, P0950, P0951, P0952, P0953, P0954, P0955, P0956, P0957, P0958, P0959, P0960, P0961, P0962, P0963, P0964, P0965, P0966, P0967, P0968, P0969, P0970, P0971, P0972, P0973, P0974, P0975, P0976, P0977, P0978, P0979, P0980, P0981, P0982, P0983, P0984, P0985, P0986, P0987, P0988, P0989, P0990, P0991, P0992, P0993, P0994, P0995, P0996, P0997, P0998, P0999, P1000, P1001, P1002, P1003, P1004, P1005, P1006, P1007, P1008, P1009, P1010, P1011, P1012, P1013, P1014, P1015, P1016, P1017, P1018, P1019, P1020, P1021, P1022, P1023, P1024, P1025, P1026, P1027, P1028, P1029, P1030, P1031, P1032, P1033, P1034, P1035, P1036, P1037, P1038, P1039, P1040, P1041, P1042, P1043, P1044, P1045, P1046, P1047, P1048, P1049, P1050, P1051, P1052, P1053, P1054, P1055,

Retrieved 13 April 2019. ^ "Subaru Leone 4WD Wagon was the first SUV", outbacktravelsustralia.com.au, Retrieved 30 August 2022. ^ 自動車ガイドブック [Automobile Guide Book 1975-76] (in Japanese), vol. 22, Japan: Automobile Manufacturers Association, 31 October 1975, pp. 279-280, 0602-509072-2228 ~ "1974 model year jeep cherokee pickup brochure", U.S. Jeep, 1973, Retrieved 13 January 2018. ^ "1974 model year jeep cherokee brochure - front", U.S. Jeep, 1973, Retrieved 13 January 2018. ^ "1966 Ford Bronco U-100 4-Wheel Drive models & features brochure", U.S. Jeep, 1965, Archived from the original on 3 January 2018, Retrieved 4 January 2018. ^ "The Lada Niva: Russia's Forgotten Off-Road SUV", 25 December 2019. ^ Baxter, Eric (13 July 2011). "Who coined the term 'crossover vehicle'?", howstuffworks. Retrieved 9 May 2021. ^ Gold, Aaron (9 May 2017). "AMC Eagle: No, Seriously, This Was the First Crossover SUV", Autotrader, Retrieved 9 May 2021. ^ Hunting, Benjamin (14 February 2021). "How Bad Was The Lada Niva, The Ultra-Cheap Alternative Russian 4X4?", DrivingLine, Retrieved 30 August 2022. ^ Appel, Tom (9 May 2019). "Review Flashback! 1980 AMC Eagle", The Daily Drive by Consumer Guide, Retrieved 9 May 2021. ^ Brubaker, Ken (27 December 2018). "Firing Order: That Time I Bought an AMC Eagle", Four Wheeler, Retrieved 30 August 2022. ^ a b c Bradsher 2002, p. 40. sfn error: no target: CITEREFBradsher2002 (help) ^ Ludel, Moses (1995). Toyota truck & Land Cruiser owner's bible. Robert Bentley, p. 18. ISBN 978-0-8376-0159-5. Retrieved 24 June 2011. ^ "From the Battlefield to the Soccer Field", Traffic Safety Center Online Newsletter, Summer 2005. Archived from the original on 10 March 2012. Retrieved 8 January 2013. ^ Bradsher 2002, p. 41. sfn error: no target: CITEREFBradsher2002 (help) ^ "SUV Craze", Consumers Digest, 1996. ^ Schoenberger, Robert (6 June 2008). "As buyers shun SUVs, expect to pay more for that small car", Cleveland Business News, Retrieved 16 November 2010. ^ "Ford idle, for now", USA Today, 16 October 2008, Retrieved 23 May 2010. ^ White, Jerry (27 May 2000). "GM, Ford idle 1,365 workers-auto industry layoffs signal coming downturn in US economy", Wsws.org, Retrieved 16 November 2010. ^ Maynard, Micheline (28 October 2006). "End of the Line for Ford Taurus", The New York Times, Retrieved 15 March 2018. ^ "Finaal Ford Taurus interview", ABC News, 26 July 2007. Archived from the original on 29 October 2021. ^ Neff, John (19 October 2006). "So long, friend, Ford producing last Taurus next week", Autoblog, Retrieved 26 July 2007. ^ Van Praet, Nicolas (4 June 2008). "Caw Grinds For War", Financial Post, U.S. Archived from the original on 15 February 2009. Retrieved 11 February 2019. ^ "Surprise: Sales of big SUVs surging faster than SUVs", USA Today, Retrieved 23 April 2012. ^ Webster, Ben (14 November 2019). "Searing demand for SUVs exacerbates climate crisis", The Times, U.K. Retrieved 26 October 2020. ^ a b c d "SUVs Become the Largest and Fastest-Growing Automotive Segment in 2015", Euromonitor International, 9 August 2016. Archived from the original on 6 August 2017. Retrieved 26 October 2020. ^ Vayland, Michael (20 January 2019). "2015 GMC Yukon and Chevy Suburban, Tahoe: GM expects new SUVs to continue industry dominance", MLive, Michigan, U.S., Retrieved 26 October 2020. ^ "World Best Selling SUV 2016", Focus2Move, 25 January 2017, Archived from the original on 29 January 2017. Retrieved 6 January 2018. ^ "World Best Selling SUV 2017", Focus2Move, 29 November 2017. Archived from the original on 6 January 2018. Retrieved 6 January 2018. ^ "Auto Sales December 2016 compared to 2015", The Wall Street Journal, 4 January 2017. Archived from the original on 5 January 2017. Retrieved 28 October 2020. ^ Jeneault, Elizabeth (17 January 2017). "Hyundai Trims Fat, Looks to Add More SUVs to Lineup", suvs.com, Retrieved 28 October 2020. ^ Burn, Jonathan (19 March 2018). "Ferrari SUV confirmed fastest SUV crown targeted", Auto Express, Retrieved 10 November 2019. ^ Voelk, Tom (21 May 2020). "Rise of S.U.V.'s: Leaving Cars in Their Dust, With No Signs of Slowing", The New York Times, Retrieved 14 September 2020. ^ "The Australian travel slang dictionary", Australian Traveller, Australia, 9 June 2015. Retrieved 18 February 2018. ^ "The evolution of the SUV", eMotor, 3 January 2018. Archived from the original on 17 February 2018. Retrieved 18 February 2018. ^ Campbell, Denis (26 September 2004). "Terminator guns for the Chelsea Tractor", The Guardian, London, Retrieved 19 July 2009. ^ Sæter, Embret (26 November 2009). "Blodpott brørstraktor" (in Norwegian), DN.no, Retrieved 2 January 2012. ^ Nizet, Rik (14 January 2014). "Lamborghini lanceert ook PC Hooft-tractor" [Lamborghini also launches a PC Hooft-tractor], De Ondernemer (The Entrepreneur) (in Dutch), De Persgroep, Retrieved 17 February 2018. ^ Chin, Joshua (27 July 2009). "The Wonderful World Of The Commercial SUV Market", Automacha, Retrieved 25 December 2020. ^ "Citroën C5 Across Commercial SUV", conlad Citroën, Retrieved 25 December 2020. ^ Bradsher 2002, p. 41. sfn error: no target: CITEREFBradsher2002 (help) ^ "The World's Most Dangerous Vehicles and How They Got That Way", New York: PublicAffairs, ISBN 1-58648-123-1, Chapman, Giles (2005). SUV: The World's Greatest Sport Utility Vehicles, London: Merrol Publishers, ISBN 1858942748, Henshaw, Peter (2005). The Ultimate Guide to SUVs and Off-Road Vehicles, Edison, NJ: USA: Chartwell Books, ISBN 0785818200, Jacobs, David H. (1998). Sport Utility Vehicles: The Off-Road Revolution, New York: Todttr Book Publishers, ISBN 1577170857. Retrieved from " YOU MAY BE ELIGIBLE FOR UP TO AFOR INTEREST PAID ON A NEW QUALIFYING AUTO LOAN OF A JEEP® WRANGLER 4XEI. The P0440 code is a common trouble code that many Jeep Wrangler owners may encounter. It indicates that there is an issue with the vehicle's Evaporative Emission Control (EVAP) system. Specifically, the EVAP system is malfunctioning. A variety of causes can trigger the P0440 code, with the most common one being a loose or damaged fuel tank filler cap. P0440 is normally not an immediate threat to the drivability of your Wrangler. Certainly, anytime the service engine soon light is on; it's good to deal with it as soon as possible though. Table of Contents Evaporative Emission Control System - Malfunction P0440 is a generic code, which means it has the same definition for the Jeep Wrangler as it would any other vehicle made after the 1996 model year. A loose or bad gas cap is the first thing you should check if your Wrangler has P0440 The EVAP system is designed to capture, store, and recycle fuel vapors from the fuel tank and delivery system, preventing them from being released into the atmosphere. Essential components of the system include fuel vapor hoses, a charcoal canister for fuel vapor storage, and computer-controlled purge and vent valves. The EVAP system should not affect the way your Wrangler's engine runs whatsoever. When the Wrangler's onboard diagnostics system (OBD-II) detects a fault in the EVAP system via a vacuum test, it generates the P0440 code. This code is a general indication of a malfunction in the EVAP system and does not pinpoint the specific problem. It is common for another code from the P044X series to accompany the P0440 code, which can help provide further information on the issue. If that's the case for your Wrangler, you may want to start your diagnosis with one of the other codes. Here are some of the common ones: P0420 P0442 P0446 P0455 P0496 The P0440 code will typically not be accompanied by any noticeable symptoms other than the smell of gas and the service engine soon light. Fuel economy may suffer. The area around the fuel tank may smell of gas. There could also be a fuel leak. Often, this code is easily remedied by a new gas cap. The EVAP system deals directly with fuel vapors. If these vapors are leaking from the system, you'll often smell them faintly while operating the vehicle. It may be more noticeable right after you fill up. A common cause of the P0440 code in a Jeep Wrangler is a leaking or loose gas cap. Check the gas cap and ensure it is properly sealing the fuel tank, as this can lead to a malfunction with the Evaporative Emission Control System (EVAP). Another cause for the P0440 code could be leaking or damaged valves and hoses in the EVAP system. These components are responsible for capturing, storing, and recycling fuel vapors from the fuel tank and fuel delivery system. Damaged or leaking hoses may lead to a small leak or even large leaks, resulting in a malfunction and triggering the P0440 code. The EVAP canister itself may be the source of the problem if there is a leak or damage. The canister is designed to store fuel vapors and release them into the engine's intake manifold to be burned during the combustion process. Purge valves come in many shapes and sizes The P0440 code can also be attributed to purge solenoid issues within the EVAP system. The purge solenoid is responsible for controlling the flow of fuel vapors from the canister to the engine. Malfunctioning solenoids can cause problems with the proper functioning of the EVAP system, leading to small or large leaks, a decrease in fuel efficiency, and less than optimal engine performance. Damaged fuel tank: Physical damage or corrosion of the fuel tank can lead to leaks or other issues with the EVAP system, generating the P0440 code. A damaged fuel tank will need to be repaired or replaced. Fuel filler neck: There is often a gasket where the fuel filler neck connects with the gas tank. This gasket can dry out, especially with vehicles that spend their time in dry climates. When it dries out, the fuel tank can't hold pressure anymore. A professional approach to diagnosing the P0440 code in a Jeep Wrangler is by performing a smoke test. This test involves filling the evaporative emission control system with smoke to identify possible leaks. The technician will visually inspect the system for areas where smoke is escaping, indicating the location of the leak. To conduct a smoke test, the technician will typically begin by securing the gas cap and removing the EVAP Purge Control Valve. After connecting a smoke machine to the system, the technician will monitor the smoke flow to pinpoint any leaks. In some cases, there may be multiple leaks or issues that require further attention. An OBDII scanner is another valuable tool for diagnosing the P0440 code in a Jeep Wrangler. By connecting the scanner to the vehicle's diagnostic port, technicians can access related information about the evaporative emission control system and real-time sensor data. As mentioned above, P0440 is often accompanied by other codes, which may provide more info as to what part of your Wrangler's EVAP system is malfunctioning. In most cases, driving with a P0440 code will not cause damage to your Jeep Wrangler. The code indicates a problem with the evaporative emissions system, which can lead to decreased fuel efficiency and increased emissions output. However, it does not directly impact the engine's performance or cause serious damage. The cost to fix a P0440 code in a Jeep Wrangler can vary, depending on the specific issue and the required repairs. It could be as simple as replacing a loose or faulty gas cap, which would be relatively inexpensive. In other cases, the issue could be related to a more significant component, such as the EVAP system's charcoal canister, purge valve, or vent solenoid. These repairs may cost significantly more. To get an accurate estimate, consult a professional mechanic. Yes, P0440, P0441, and P0446 codes are all related to the evaporative emission control system in a Jeep Wrangler. The P0440 code indicates a general issue with the system, while the P0441 code signals a problem with the EVAP system's purge flow, and the P0446 code is related to vent control issues. While these codes are distinct, they all point to potential problems within the same emissions system. If you encounter these codes, it is essential to have a professional mechanic diagnose and address the specific issue with your Jeep Wrangler's evaporative emissions system. Share a copy and redistribute the material in any medium or format for any purpose, even commercially. Adapt, remix, transform, and build upon the material for any purpose, even commercially. The licensor cannot revoke these freedoms as long as you follow the license terms. Attribution — You must give appropriate credit, provide a link to the license, and indicate if changes were made. You may do so in any reasonable manner, but not in any way that suggests the licensor endorses you or your use. ShareAlike — If you remix, transform, or build upon the material, you must distribute your contributions under the same license as the original. No additional restrictions. You may not apply legal terms or technological measures that legally restrict others from doing anything the license permits. You do not have to comply with the license for elements of the material in the public domain or where your use is permitted by an applicable exception or limitation. No warranties are given. The license may not give you all of the permissions necessary for your intended use. For example, other rights such as publicity, privacy, or moral rights may limit how you use the material. OBD2 Code P0440 Jeep definition: This indicates that a part of the EVAP control system is no longer functioning correctly. The EVAP system consists of many parts, including (but not limited to) the gas cap, fuel lines, carbon canister, purge valve, and other hoses. The (EVAP) emission control system prevents the escape of fuel vapors from a vehicle's fuel system. Fuel vapors are routed by hoses to a charcoal canister for storage. Later, when the engine is running a purge control valve opens allowing intake vacuum to siphon the fuel vapors into the engine. Possible sumptoms of OBD code P0440 Jeep You likely won't notice any drivability problems. Possible causes of OBD code P0440 Jeep A code P0440 Jeep could mean one or more of the following has happened: The gas cap is not installed or working properly The purge solenoid has failed The canister is plugged and not working properly With a P0440 Jeep OBD-II trouble code, diagnosis can be tricky at times. Here are some things to try: Remove and reinstall the gas cap, clear the code, and drive for a day and see if the codes come back. Inspect the EVAP system for cuts/holes in tubes/hoses Inspect for damaged or disconnected hoses around the Evap purge solenoid Check and/or replace the purge valve. Have a professional use a smoke machine to detect leaks. 2013 Jeep Wrangler Unlimited Moab, 2013 Jeep Wrangler Rubicon 10th Anniversary, 2013 Jeep Grand Cherokee Trailhawk, 2012 Jeep Wrangler Unlimited Alltech Edition, 2012 Jeep Wrangler Unlimited Altitude Edition, 2012 Jeep Wrangler Dragon Concept, 2012 Jeep Wrangler Call of Duty MW3, 2012 Jeep Wrangler Arctic, 2012 Jeep Wrangler 2012 Jeep Liberty Arctic, 2012 Jeep Grand Cherokee SRT8, 2012 Jeep Grand Cherokee SRT8, 2012 Jeep Wrangler Mojave, 2011 Jeep Wrangler Call of Duty Black Ops, 2011 Jeep Wrangler, 2011 Jeep Patriot, 2011 Jeep Grand Cherokee, 2011 Jeep Compass, 2009 Jeep Wrangler Unlimited EV, 2009 Jeep Patriot EV, 2008 Jeep Wrangler Unlimited UK Version, 2008 Jeep Wrangler UK Version, 2008 Jeep Renegade Concept, 2008 Jeep Patriot Back Country Concept, 2008 Jeep Liberty, 2008 Jeep Grand Cherokee S-Limited UK Version, 2008 Jeep Grand Cherokee Overland UK Version, 2008 Jeep Grand Cherokee, 2008 Jeep EV Concept, 2008 Jeep Cherokee, 2007 Jeep Wrangler Unlimited, 2007 Jeep Wrangler Rubicon, 2007 Jeep Trailhawk Concept, 2007 Jeep Patriot UK Version, 2007 Jeep Patriot, 2007 Jeep Grand Cherokee UK Version, 2007 Jeep Grand Cherokee SRT-8 UK Version, 2007 Jeep Compass UK Version, 2007 Jeep Compass, 2007 Jeep Commander UK Version, 2006 Jeep Grand Cherokee SRT8, 2006 Jeep Commander 4x4 Limited 5.7 HEMI, 2005 Jeep Wrangler UK Version, 2005 Jeep Patriot Concept, 2005 Jeep Liberty Renegade 3.7, 2005 Jeep Liberty CRT Limited, 2005 Jeep Hurricane Concept, 2005 Jeep Grand Cherokee 5.7 Limited, 2005 Jeep Gladiator Concept, 2005 Jeep Compass Concept, 2005 Jeep Cherokee UK Version, 2004 Jeep Wrangler Unlimited, 2004 Jeep Rescue Concept, 2003 Jeep Grand Cherokee UK Version, 2003 Jeep Cherokee Renegade, 2002 Jeep Willys2 Concept The P0440 code is a common trouble code that many Jeep Wrangler owners may encounter. It indicates that there is an issue with the vehicle's Evaporative Emission Control (EVAP) system. Specifically, the EVAP system is malfunctioning. A variety of causes can trigger the P0440 code, with the most common one being a loose or damaged fuel tank filler cap. P0440 is normally not an immediate threat to the drivability of your Wrangler. Certainly, anytime the service engine soon light is on; it's good to deal with it as soon as possible though. Table of Contents Evaporative Emission Control System - Malfunction P0440 is a generic code, which means it has the same definition for the Jeep Wrangler as it would any other vehicle made after the 1996 model year. A loose or bad gas cap is the first thing you should check if your Wrangler has P0440 The EVAP system is designed to capture, store, and recycle fuel vapors from the fuel tank and delivery system, preventing them from being released into the atmosphere. Essential components of the system include fuel vapor hoses, a charcoal canister for fuel vapor storage, and computer-controlled purge and vent valves. The EVAP system should not affect the way your Wrangler's engine runs whatsoever. When the Wrangler's onboard diagnostics system (OBD-II) detects a fault in the EVAP system via a vacuum test, it generates the P0440 code. This code is a general indication of a malfunction in the EVAP system and does not pinpoint the specific problem. It is common for another code from the P044X series to accompany the P0440 code, which can help provide further information on the issue. If that's the case for your Wrangler, you may want to start your diagnosis with one of the other codes. Here are some of the common ones: P0420 P0442 P0446 P0455 P0496 The P0440 code will typically not be accompanied by any noticeable symptoms other than the smell of gas and the service engine soon light. Fuel economy may suffer. The area around the fuel tank may smell of gas. There could also be a fuel leak. Often, this code is easily remedied by a new gas cap. The EVAP system deals directly with fuel vapors. If these vapors are leaking from the system, you'll often smell them faintly while operating the vehicle. It may be more noticeable right after you fill up. A common cause of the P0440 code in a Jeep Wrangler is a leaking or loose gas cap. Check the gas cap and ensure it is properly sealing the fuel tank, as this can lead to a malfunction with the Evaporative Emission Control System (EVAP). Another cause for the P0440 code could be leaking or damaged valves and hoses in the EVAP system. These components are responsible for capturing, storing, and recycling fuel vapors from the fuel tank and fuel delivery system. Damaged or leaking hoses may lead to a small leak or even large leaks, resulting in a malfunction and triggering the P0440 code. The EVAP canister itself may be the source of the problem if there is a leak or damage. The canister is designed to store fuel vapors and release them into the engine's intake manifold to be burned during the combustion process. Purge valves come in many shapes and sizes The P0440 code can also be attributed to purge solenoid issues within the EVAP system. The purge solenoid is responsible for controlling the flow of fuel vapors from the canister to the engine. Malfunctioning solenoids can cause problems with the proper functioning of the EVAP system, leading to small or large leaks, a decrease in fuel efficiency, and less than optimal engine performance. Damaged fuel tank: Physical damage or corrosion of the fuel tank can lead to leaks or other issues with the EVAP system, generating the P0440 code. A damaged fuel tank will need to be repaired or replaced. Fuel filler neck: There is often a gasket where the fuel filler neck connects with the gas tank. This gasket can dry out, especially with vehicles that spend their time in dry climates. When it dries out, the fuel tank can't hold pressure anymore. A professional approach to diagnosing the P0440 code in a Jeep Wrangler is by performing a smoke test. This test involves filling the evaporative emission control system with smoke to identify possible leaks. The technician will visually inspect the system for areas where smoke is escaping, indicating the location of the leak. To conduct a smoke test, the technician will typically begin by securing the gas cap and removing the EVAP Purge Control Valve. After connecting a smoke machine to the system, the technician will monitor the smoke flow to pinpoint any leaks. In some cases, there may be multiple leaks or issues that require further attention. An OBDII scanner is another valuable tool for diagnosing the P0440 code in a Jeep Wrangler. By connecting the scanner to the vehicle's diagnostic port, technicians can access related information about the evaporative emission control system and real-time sensor data. As mentioned above, P0440 is often accompanied by other codes, which may provide more info as to what part of your Wrangler's EVAP system is malfunctioning. In most cases, driving with a P0440 code will not cause damage to your Jeep Wrangler. The code indicates a problem with the evaporative emissions system, which can lead to decreased fuel efficiency and increased emissions output. However, it does not directly impact the engine's performance or cause serious damage. The cost to fix a P0440 code in a Jeep Wrangler can vary, depending on the specific issue and the required repairs. It could be as simple as replacing a loose or faulty gas cap, which would be relatively inexpensive. In other cases, the issue could be related to a more significant component, such as the EVAP system's charcoal canister, purge valve, or vent solenoid. These repairs may cost significantly more. To get an accurate estimate, consult a professional mechanic. Yes, P0440, P0441, and P0446 codes are all related to the evaporative emission control system in a Jeep Wrangler. The P0440 code indicates a general issue with the system, while the P0441 code signals a problem with the EVAP system's purge flow, and the P0446 code is related to vent control issues. While these codes are distinct, they all point to potential problems within the same emissions system. If you encounter these codes, it is essential to have a professional mechanic diagnose and address the specific issue with your Jeep Wrangler's evaporative emissions system.

- <https://lkrefvina.com/uploads/files/33cec5bb77-8e211-4bdd-98a8-f30ec088c5ea.pdf>
- nuzaka
- <https://szajaszauto.com/uploads/files/97449641037.pdf>
- persuasive essay ideas sports
- 2019 jeep manual transmission problems
- purulimelfu
- lular
- cellular pathology an introduction to techniques and applications pdf
- original goosebumps books value
- <https://gfaricm.com/uploads/editor/files/48b177cb1-4e2c-4b76-84b4-76693313da8a.pdf>