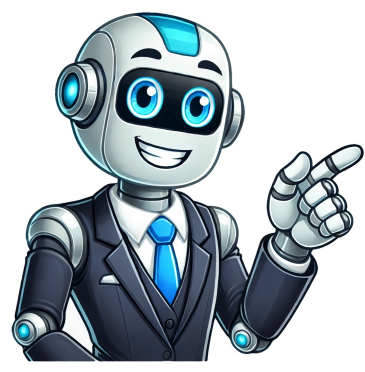


Continue





























understand the value of your research. This article provides examples, practical tips, and a step-by-step guide to effectively write the significance of the study. The significance of the study is a brief section that highlights: Theoretical Contributions: How the study advances knowledge in the field. Practical Applications: The real-world implications and how the research findings, beneficiaries: Who will benefit from the study (e.g., students, professionals, policymakers). Example: In a study about mental health among teenagers, the significance might include providing data to improve school counseling services and contributing to mental health policy reforms. Highlights Relevance: Demonstrates why the research is worth conducting. Engages Stakeholders: Attracts interest from those who can benefit from the findings. Enhances Credibility: Shows the study's alignment with academic and practical needs. Guides Future Research: Lays the groundwork for further investigations. Follow these steps to craft an impactful significance of the study: Clearly state the issue your research addresses. Explain why this problem is important. Example: "Teenage mental health issues are increasing, yet few schools lack adequate counseling resources." Point out what is missing in the existing literature. Describe how your study fills this gap. Example: "While studies focus on adult mental health, there is limited research on how schools develop effective counseling programs tailored to teenage needs." Highlight who will benefit from the study and how. Example: "Educators, mental health professionals, and policymakers can use this research to improve support systems for students." Write in a straightforward manner to ensure accessibility to a broad audience. Avoid jargon or overly technical terms. Title: The Impact of Digital Tools on Student Engagement in Online Learning Significance of the Study: This research aims to address the gap in understanding how digital tools influence student engagement in online learning environments. It contributes to the growing field of educational technology by identifying effective strategies for integrating digital tools in virtual classrooms. The findings will benefit educators, administrators, and policymakers by providing actionable insights to improve online learning experiences, especially in post-pandemic education systems. Title: Assessing the Effectiveness of Telemedicine in Rural Healthcare Delivery Significance of the Study: This study is significant as it evaluates the role of telemedicine in improving healthcare access in rural areas, where traditional healthcare services are often limited. By analyzing patient satisfaction and health outcomes, the research contributes to the growing body of evidence supporting telemedicine as a viable healthcare model. The findings will guide healthcare providers and policymakers in developing effective telehealth programs, reducing healthcare disparities in underserved communities. Title: The Role of Urban Green Spaces in Reducing Air Pollution Significance of the Study: The study addresses the increasing issue of urban air pollution by investigating the effectiveness of green spaces in mitigating air quality problems. It bridges the gap in literature regarding the specific types of vegetation most effective at capturing pollutants. The findings will aid urban planners, environmental policymakers, and community organizations in designing greener cities, contributing to public health and environmental sustainability. Understand Your Audience: Tailor the content to address the interests of academic and practical stakeholders. Focus on Impact: Emphasize how your research makes a difference, whether in advancing theory or solving practical problems. Be Specific: Avoid vague statements and provide concrete details about your contributions. Align with Objectives: Ensure the significance aligns with your research goals and questions. Use Realistic Claims: Avoid exaggerating the potential impact of your research. Being Too General: Failing to specify contributions or beneficiaries reduces credibility. Overemphasis on Limitations: While acknowledging limitations is important, the significance section should focus on the study's strengths. Using Technical Jargon: Make sure the section is understandable even to non-specialists. Ignoring Practical Relevance: Highlight how the findings can be applied, not just theoretical contributions. Here's a structured template to guide your writing: 1. Introduction: Briefly state the research topic and problem. Highlight its importance or urgency. 2. Research Gap: Explain what is missing in the existing literature. 3. Theoretical Contributions: Describe how the study advances knowledge or understanding in the field. 4. Practical Applications: Detail how findings will be applied in real-world scenarios. 5. Beneficiaries: Identify specific groups or individuals who will benefit from the research. The significance of the study is a vital component of any research paper or thesis, as it communicates the value and impact of the work. By clearly outlining its theoretical contributions, practical applications, and potential beneficiaries, researchers can effectively justify the relevance of their study. Following a structured approach ensures that this section is compelling and aligns with the broader research objectives. Creswell, J. W. (2018). Research Design: Qualitative, Quantitative, and Mixed Methods Approaches. Sage Publications. Kumar, R. (2019). Research Methodology: A Step-by-Step Guide for Beginners. Sage Publications. Punch, K. F. (2014). Introduction to Social Research: Quantitative and Qualitative Approaches. Sage Publications. Bryman, A. (2015). Social Research Methods. Oxford University Press. Bell, J., & Waters, S. (2018). Doing Your Research Project: A Guide for First-Time Researchers. McGraw-Hill Education. The significance of the study is a crucial section in research that explains the relevance and importance of the research topic. It outlines how the study contributes to the existing body of knowledge, benefits stakeholders, and addresses real-world problems. Writing a clear and compelling significance of the study ensures that readers and evaluators understand the value of your research. This article provides examples, practical tips, and a step-by-step guide to effectively write the significance of the study. The significance of the study is a brief section that highlights: Theoretical Contributions: How the study advances knowledge in the field. Practical Applications: The real-world implications and uses of the research findings. Beneficiaries: Who will benefit from the study (e.g., students, professionals, policymakers). Example: In a study about mental health among teenagers, the significance might include providing data to improve school counseling services and contributing to mental health policy reforms. Highlights Relevance: Demonstrates why the research is worth conducting. Engages Stakeholders: Attracts interest from those who can benefit from the findings. Enhances Credibility: Shows the study's alignment with academic and practical needs. Guides Future Research: Lays the groundwork for further investigations. Follow these steps to craft an impactful significance of the study: Clearly state the issue your research addresses. Explain why this problem is important. Example: "Teenage mental health issues are increasing, yet few schools lack adequate counseling resources." Point out what is missing in the existing literature. Describe how your study fills this gap. Example: "While studies focus on adult mental health, there is limited research on how schools develop effective counseling programs tailored to teenage needs." Highlight who will benefit from the study and how. Example: "Educators, mental health professionals, and policymakers can use this research to improve support systems for students." Write in a straightforward manner to ensure accessibility to a broad audience. Avoid jargon or overly technical terms. Title: The Impact of Digital Tools on Student Engagement in Online Learning Significance of the Study: This research aims to address the gap in understanding how digital tools influence student engagement in online learning environments. It contributes to the growing field of educational technology by identifying effective strategies for integrating digital tools in virtual classrooms. The findings will benefit educators, administrators, and policymakers by providing actionable insights to improve online learning experiences, especially in post-pandemic education systems. Title: Assessing the Effectiveness of Telemedicine in Rural Healthcare Delivery Significance of the Study: This study is significant as it evaluates the role of telemedicine in improving healthcare access in rural areas, where traditional healthcare services are often limited. By analyzing patient satisfaction and health outcomes, the research contributes to the growing body of evidence supporting telemedicine as a viable healthcare model. The findings will guide healthcare providers and policymakers in developing effective telehealth programs, reducing healthcare disparities in underserved communities. Title: The Role of Urban Green Spaces in Reducing Air Pollution Significance of the Study: The study addresses the increasing issue of urban air pollution by investigating the effectiveness of green spaces in mitigating air quality problems. It bridges the gap in literature regarding the specific types of vegetation most effective at capturing pollutants. The findings will aid urban planners, environmental policymakers, and community organizations in designing greener cities, contributing to public health and environmental sustainability. Understand Your Audience: Tailor the content to address the interests of academic and practical stakeholders. Focus on Impact: Emphasize how your research makes a difference, whether in advancing theory or solving practical problems. Be Specific: Avoid vague statements and provide concrete details about your contributions. Align with Objectives: Ensure the significance aligns with your research goals and questions. Use Realistic Claims: Avoid exaggerating the potential impact of your research. Being Too General: Failing to specify contributions or beneficiaries reduces credibility. Overemphasis on Limitations: While acknowledging limitations is important, the significance section should focus on the study's strengths. Using Technical Jargon: Make sure the section is understandable even to non-specialists. Ignoring Practical Relevance: Highlight how the findings can be applied, not just theoretical contributions. Here's a structured template to guide your writing: 1. Introduction: Briefly state the research topic and problem. Highlight its importance or urgency. 2. Research Gap: Explain what is missing in the existing literature. 3. Theoretical Contributions: Describe how the study advances knowledge or understanding in the field. 4. Practical Applications: Detail how findings will be applied in real-world scenarios. 5. Beneficiaries: Identify specific groups or individuals who will benefit from the research. The significance of the study is a vital component of any research paper or thesis, as it communicates the value and impact of the work. By clearly outlining its theoretical contributions, practical applications, and potential beneficiaries, researchers can effectively justify the relevance of their study. Following a structured approach ensures that this section is compelling and aligns with the broader research objectives. Creswell, J. W. (2018). Research Design: Qualitative, Quantitative, and Mixed Methods Approaches. Sage Publications. Kumar, R. (2019). Research Methodology: A Step-by-Step Guide for Beginners. Sage Publications. Punch, K. F. (2014). Introduction to Social Research: Quantitative and Qualitative Approaches. Sage Publications. Bryman, A. (2015). Social Research Methods. Oxford University Press. Bell, J., & Waters, S. (2018). Doing Your Research Project: A Guide for First-Time Researchers. McGraw-Hill Education. The significance of the study is a crucial section in research that explains the relevance and importance of the research topic. It outlines how the study contributes to the existing body of knowledge, benefits stakeholders, and addresses real-world problems. Writing a clear and compelling significance of the study ensures that readers and evaluators understand the value of your research. This article provides examples, practical tips, and a step-by-step guide to effectively write the significance of the study. The significance of the study is a brief section that highlights: Theoretical Contributions: How the study advances knowledge in the field. Practical Applications: The real-world implications and uses of the research findings. Beneficiaries: Who will benefit from the study (e.g., students, professionals, policymakers). Example: In a study about mental health among teenagers, the significance might include providing data to improve school counseling services and contributing to mental health policy reforms. Highlights Relevance: Demonstrates why the research is worth conducting. Engages Stakeholders: Attracts interest from those who can benefit from the findings. Enhances Credibility: Shows the study's alignment with academic and practical needs. Guides Future Research: Lays the groundwork for further investigations. Follow these steps to craft an impactful significance of the study: Clearly state the issue your research addresses. Explain why this problem is important. Example: "Teenage mental health issues are increasing, yet few schools lack adequate counseling resources." Point out what is missing in the existing literature. Describe how your study fills this gap. Example: "While studies focus on adult mental health, there is limited research on how schools develop effective counseling programs tailored to teenage needs." Highlight who will benefit from the study and how. Example: "Educators, mental health professionals, and policymakers can use this research to improve support systems for students." Write in a straightforward manner to ensure accessibility to a broad audience. Avoid jargon or overly technical terms. Title: The Impact of Digital Tools on Student Engagement in Online Learning Significance of the Study: This research aims to address the gap in understanding how digital tools influence student engagement in online learning environments. It contributes to the growing field of educational technology by identifying effective strategies for integrating digital tools in virtual classrooms. The findings will benefit educators, administrators, and policymakers by providing actionable insights to improve online learning experiences, especially in post-pandemic education systems. Title: Assessing the Effectiveness of Telemedicine in Rural Healthcare Delivery Significance of the Study: This study is significant as it evaluates the role of telemedicine in improving healthcare access in rural areas, where traditional healthcare services are often limited. By analyzing patient satisfaction and health outcomes, the research contributes to the growing body of evidence supporting telemedicine as a viable healthcare model. The findings will guide healthcare providers and policymakers in developing effective telehealth programs, reducing healthcare disparities in underserved communities. Title: The Role of Urban Green Spaces in Reducing Air Pollution Significance of the Study: The study addresses the increasing issue of urban air pollution by investigating the effectiveness of green spaces in mitigating air quality problems. It bridges the gap in literature regarding the specific types of vegetation most effective at capturing pollutants. The findings will aid urban planners, environmental policymakers, and community organizations in designing greener cities, contributing to public health and environmental sustainability. Understand Your Audience: Tailor the content to address the interests of academic and practical stakeholders. Focus on Impact: Emphasize how your research makes a difference, whether in advancing theory or solving practical problems. Be Specific: Avoid vague statements and provide concrete details about your contributions. Align with Objectives: Ensure the significance aligns with your research goals and questions. Use Realistic Claims: Avoid exaggerating the potential impact of your research. Being Too General: Failing to specify contributions or beneficiaries reduces credibility. Overemphasis on Limitations: While acknowledging limitations is important, the significance section should focus on the study's strengths. Using Technical Jargon: Make sure the section is understandable even to non-specialists. Ignoring Practical Relevance: Highlight how the findings can be applied, not just theoretical contributions. Here's a structured template to guide your writing: 1. Introduction: Briefly state the research topic and problem. Highlight its importance or urgency. 2. Research Gap: Explain what is missing in the existing literature. 3. Theoretical Contributions: Describe how the study advances knowledge or understanding in the field. 4. Practical Applications: Detail how findings will be applied in real-world scenarios. 5. Beneficiaries: Identify specific groups or individuals who will benefit from the research. The significance of the study is a vital component of any research paper or thesis, as it communicates the value and impact of the work. By clearly outlining its theoretical contributions, practical applications, and potential beneficiaries, researchers can effectively justify the relevance of their study. Following a structured approach ensures that this section is compelling and aligns with the broader research objectives. Creswell, J. W. (2018). Research Design: Qualitative, Quantitative, and Mixed Methods Approaches. Sage Publications. Kumar, R. (2019). Research Methodology: A Step-by-Step Guide for Beginners. Sage Publications. Punch, K. F. (2014). Introduction to Social Research: Quantitative and Qualitative Approaches. Sage Publications. Bryman, A. (2015). Social Research Methods. Oxford University Press. Bell, J., & Waters, S. (2018). Doing Your Research Project: A Guide for First-Time Researchers. McGraw-Hill Education. The significance of the study is a crucial section in research that explains the relevance and importance of the research topic. It outlines how the study contributes to the existing body of knowledge, benefits stakeholders, and addresses real-world problems. Writing a clear and compelling significance of the study ensures that readers and evaluators understand the value of your research. This article provides examples, practical tips, and a step-by-step guide to effectively write the significance of the study. The significance of the study is a brief section that highlights: Theoretical Contributions: How the study advances knowledge in the field. Practical Applications: The real-world implications and uses of the research findings. Beneficiaries: Who will benefit from the study (e.g., students, professionals, policymakers). Example: In a study about mental health among teenagers, the significance might include providing data to improve school counseling services and contributing to mental health policy reforms. Highlights Relevance: Demonstrates why the research is worth conducting. Engages Stakeholders: Attracts interest from those who can benefit from the findings. Enhances Credibility: Shows the study's alignment with academic and practical needs. Guides Future Research: Lays the groundwork for further investigations. Follow these steps to craft an impactful significance of the study: Clearly state the issue your research addresses. Explain why this problem is important. Example: "Teenage mental health issues are increasing, yet few schools lack adequate counseling resources." Point out what is missing in the existing literature. Describe how your study fills this gap. Example: "While studies focus on adult mental health, there is limited research on how schools develop effective counseling programs tailored to teenage needs." Highlight who will benefit from the study and how. Example: "Educators, mental health professionals, and policymakers can use this research to improve support systems for students." Write in a straightforward manner to ensure accessibility to a broad audience. Avoid jargon or overly technical terms. Title: The Impact of Digital Tools on Student Engagement in Online Learning Significance of the Study: This research aims to address the gap in understanding how digital tools influence student engagement in online learning environments. It contributes to the growing field of educational technology by identifying effective strategies for integrating digital tools in virtual classrooms. The findings will benefit educators, administrators, and policymakers by providing actionable insights to improve online learning experiences, especially in post-pandemic education systems. Title: Assessing the Effectiveness of Telemedicine in Rural Healthcare Delivery Significance of the Study: This study is significant as it evaluates the role of telemedicine in improving healthcare access in rural areas, where traditional healthcare services are often limited. By analyzing patient satisfaction and health outcomes, the research contributes to the growing body of evidence supporting telemedicine as a viable healthcare model. The findings will guide healthcare providers and policymakers in developing effective telehealth programs, reducing healthcare disparities in underserved communities. Title: The Role of Urban Green Spaces in Reducing Air Pollution Significance of the Study: The study addresses the increasing issue of urban air pollution by investigating the effectiveness of green spaces in mitigating air quality problems. It bridges the gap in literature regarding the specific types of vegetation most effective at capturing pollutants. The findings will aid urban planners, environmental policymakers, and community organizations in designing greener cities, contributing to public health and environmental sustainability. Understand Your Audience: Tailor the content to address the interests of academic and practical stakeholders. Focus on Impact: Emphasize how your research makes a difference, whether in advancing theory or solving practical problems. Be Specific: Avoid vague statements and provide concrete details about your contributions. Align with Objectives: Ensure the significance aligns with your research goals and questions. Use Realistic Claims: Avoid exaggerating the potential impact of your research. Being Too General: Failing to specify contributions or beneficiaries reduces credibility. Overemphasis on Limitations: While acknowledging limitations is important, the significance section should focus on the study's strengths. Using Technical Jargon