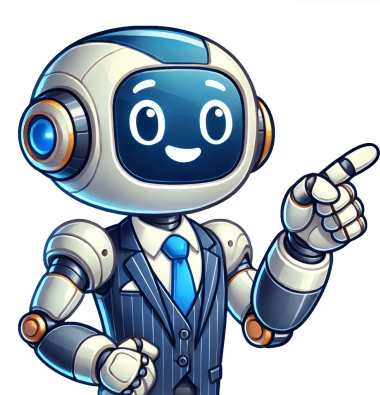


Click to verify



Home - Diy Moving, garage sale find or clearance -- these are all reasons why you would need to cut metal bar stool legs to resize them. Bar stools should sit 12 to 24 inches below the bottom of the counter top. Most metal bar stool legs are made of a hollow, tubular metal which is simple to cut. Trim your bar stool legs to fit the counter at your new place after you move. Precision is needed to make sure your cuts are even so your stool, whether new or old, is perfectly level and comfortable to sit upon. Bar stool with tubular metal legs Tape measure Marker Safety glasses Hack saw Fine-grit sanding block for metal surfaces Rubber stoppers (optional) Examine the feet of your bar stool. Some stools have feet or caps that are permanently soldered onto the ends of the legs, while others have rubber or removable stoppers. If your stool does not have removable feet, you will need to purchase rubber stoppers at the home repair or hardware store. Measure the height of the counter where the stool will be used, then measure the height of the bar stool. Decide how tall you would like to make your bar stool. Subtract the desired height from the existing height. Take into consideration the thickness of the rubber stoppers at the feet. Turn the stool on its side. Remove the feet if possible. Measure the amount that you would like to cut off and mark with a marker. Turn the stool to the next leg and repeat Step 3. Repeat for the third and fourth legs. Cut the legs with a hacksaw. Make even, long strokes when sawing. Do not rock the saw back and forth. Apply pressure on the forward stroke only, not the back. The idea is to have a straight cut so the legs will sit level. Sand the ends of the legs so they are smooth and have no rough spots. Place the feet on the ends of the legs and check the height and balance of the bar stool. If it is off a small amount, try to adjust the feet to see if it will help stabilize it. Moving, garage sale find or clearance -- these are all reasons why you would need to cut metal bar stool legs to resize them. Some stools have feet or caps that are permanently soldered onto the ends of the legs, while others have rubber or removable stoppers. Turn the stool on its side. Measure the amount that you would like to cut off and mark with a marker. Place the feet on the ends of the legs and check the height and balance of the bar stool. Cutting furniture legs might sound extreme, but it can actually be a great way to customise or repurpose your furniture. You can shorten a table to create a coffee table, adjust chair legs for a more ergonomic fit, or finally level the wobbly stool thats been driving you crazy.In terms of how to cut furniture legs, the process requires a lot of careful planning and precision. If you use the wrong technique, or you dont get your measurements right, you might end up with uneven cuts, instability, or even furniture you can no longer use.Sure, you can cut furniture legs, but you cant easily make them longer or correct any mistakes you make. Well show you how to cut down furniture legs in this guide, but if you dont 100% trust your DIY skills, you might be better off investing in new legs instead of hacking away at your old ones.Here at The Hairpin Leg Co., youll find the best furniture legs, with designs to suit any space and style. Our premium legs are manufactured from top-quality materials, giving you unmatched durability without compromising on design. Find your legs today - we have free delivery on UK orders over 50!Why Would You Need to Cut Furniture Legs?Why would anyone need to learn how to cut furniture legs? Maybe youre unhappy with your coffee table leg length, or youre trying to figure out how to fix wobbly dining table legs. There are many reasons for cutting furniture legs - here are some of the most common ones.Adjusting Height for FunctionalityOne of the main reasons for learning how to cut down furniture legs is to adjust the height of a piece for better functionality. For example, you might adjust chair legs for a child-friendly seating option. This is great for repurposing old furniture, or just making your existing furniture more functional.Levelling Uneven FurnitureFurniture with uneven legs can lead to wobbling, which is inconvenient and potentially unsafe. Cutting the legs to even lengths can restore stability and prevent further damage to the furniture or your floors. This is especially important for handmade pieces that may not have been crafted with precise measurements.Customising FurnitureCutting furniture legs is a great way to customise a piece and give it a fresh look. For instance, lowering a dresser or bedside table can make it more visually appealing in a modern, low-profile design scheme. If youre upcycling or customising, you can also learn how to paint furniture legs for a new look.Determining if Cutting Down Legs is a Viable OptionBefore you start cutting furniture legs, you first need to figure out if its even an option - its not suitable for all types of furniture legs. Think about the material and design of your furniture, as some pieces may lose structural integrity or aesthetic appeal from cutting their legs.Also, if youre cutting furniture legs because youre dealing with a wobbly table or chair, adding risers or pads under the shorter legs could be a simpler solution than cutting the longer legs.How to Cut Furniture Legs: Step-by-Step GuideIf you decide that cutting furniture legs is the way to go, there are a few things you need to do before reaching for the saw. Lets take a look at how to cut furniture legs without ending up with a DIY disaster.Step 1: Gather Your ToolsFirst of all, make sure you have everything you need. Depending on the material of the furniture legs, you may require:A measuring tape and rulerA pencil or markerA handsaw, circular saw, or mitre saw (for wood legs)A hacksaw (if learning how to cut metal furniture legs)Sandpaper or a sanding blockClamps to secure the furnitureA level to check your workStep 2: Measure (Twice) and MarkAccurate measurements are essential when youre learning how to cut furniture legs. Use a measuring tape to determine how much height needs to be removed from each leg and mark the cut line on each leg with a pencil or marker.If the legs are tapered, measure from the same reference point on each leg to ensure uniformity. Double-check all measurements to avoid cutting too much or unevenly.Step 3: Prepare the WorkspaceChoose a flat, uncluttered, stable surface to work on and make sure you have good lighting. Use clamps to secure the furniture (or its legs if youve removed them) to prevent shifting during the cutting process. Wear safety glasses and gloves to protect yourself while cutting.Step 4: Best Practices for Cutting the LegsCutting requires precision and patience. Align your saw with the marked line and begin cutting slowly to ensure accuracy. If youre using a power saw, let the blade do the work without forcing it through the leg.For tapered or angled legs, follow the natural angle to maintain the furniture's original aesthetic. Check your progress frequently to stay on track with the marked line.Step 5: Smooth the EdgesOnce the legs are cut, its important to smooth the edges to remove debris and protect your floors from any sharp pieces. Use sandpaper or a sanding block to eliminate any roughness or splinters on wooden legs.If youre learning how to cut metal furniture legs, use a metal file or sandpaper to remove sharp edges. Make sure that the surface is even and ready for reattachment or finishing touches, such as paint or stain.Step 6: Reattach and Check for StabilityAfter cutting and smoothing the legs, reattach the legs to the furniture, ensuring they are securely fastened. You can find tips on the best way to connect table legs and how to install furniture legs in our guides. Place the furniture on a level surface to check for stability, and make any final adjustments if the piece wobbles or sits unevenly.Common Challenges in Cutting Furniture LegsEven if you plan everything as carefully as possible, you can still run into problems when learning how to cut furniture legs. One of the most common issues is uneven cuts - this can happen if your measurements are off or the saw isnt steady. Always measure and use a guide, like a mitre box, for straight cuts.Splintering or cracking can also derail your DIY furniture leg project - you can prevent this by using sharp tools and cutting slowly, especially with hardwood. One of the hardest things is matching cuts on tapered or angled legs. Use a protractor or angle finder to replicate the original angle as accurately as possible.Dont Bother Cutting Table Legs Upgrade to the Proper Size at The Hairpin Leg Co.If youre making DIY dining table legs, cutting them to adjust the length is a relatively low-stakes project. On the other hand, if youre dealing with an expensive or antique piece of furniture, cutting the legs yourself can be risky - theres a lot that could go wrong, and its best not to attempt unless you have 100% faith in your ability.If youd rather not take the risk, why not treat yourself to brand-new furniture legs, in the length and style youve been picturing? Wondering where to buy wooden furniture legs or the best metal table legs for your project? Here at The Hairpin Leg Co., we have the ultimate selection of furniture legs. Browse our: Youre bound to find something you love! And, not only do we have the best table leg design, but we also have a knowledgeable team of experts who are always ready to provide tips, advice, and insights for your next project.Our furniture legs are made for makers, and while we may cut premium oak or sturdy steel to manufacture them, we certainly dont cut any corners. Youll find nothing but the best quality furniture legs, built to last and available in a huge selection of modern and traditional styles.Parting Thoughts on How to Cut Down Furniture LegsSo, now you know how to cut metal furniture legs and wooden furniture legs. Yes, you can cut furniture legs to adjust the height, level uneven pieces, or add a personal touch to your dcor, but it also comes with a risk - you might crack or splinter your legs, or end up with uneven cuts.If you dont trust your DIY skills, or youre working with expensive furniture, cutting furniture legs might not be the best option. Instead, why not upgrade to premium, pre-made furniture legs from The Hairpin Leg Co.? We have a huge selection of furniture legs, including the best dining table legs, in styles and lengths to suit all design aesthetics. With The Hairpin Leg Co., you can achieve the perfect furniture height effortlessly while adding a touch of style to your space.Explore our collection today and transform your furniture without lifting a saw! Skip to main content Reddit and its partners use cookies and similar technologies to provide you with a better experience. By accepting all cookies, you agree to our use of cookies to deliver and maintain our services and site, improve the quality of Reddit, personalize Reddit content and advertising, and measure the effectiveness of advertising. By rejecting non-essential cookies, Reddit may still use certain cookies to ensure the proper functionality of our platform. For more information, please see our Cookie Notice and our Privacy Policy. Wayfair.com had bar stools that we really liked and had great reviews, but they could only be adjusted to 24 or 29. There was no adjustment in between. You know, the Goldilocks problem of too high or too short. And for us, 26.5 was just right.Thus, the bar stools needed to be shortened.Yes, I could have probably cut the too-tall legs down using a hacksaw. However, since we bought 6 of these stools, Id have to cut 24 legs by hand! Getting through even one leg was really tough. My search for ways to cut all of these metal stool legs, and have them all exactly the same length, was unsuccessful. I found a lot of information on cutting wood stools, but not much for metal. Last thing I wanted was crooked, wobbly stools!I didnt want to purchase a dedicated (and expensive) metal-cutting mitre saw, and simple chop saws only cut at 90 degree angles. The mitre saw I already have is only meant for cutting wood, so it doesnt have any clamping system to hold the work down. The solution:I experimented and came up with a pretty simple way to tackle this project.After much research, I discovered a metal-cutting blade designed for handheld circular saws. I decided to try using it in my mitre saw since it would be running at similar speed. I found one for around \$10 at Home Depot and figured that if it didnt work, I wouldnt be out a lot of money.Disconnecting the built-in guard on the saw and making a simple cutting jig, I was able to use the tools I already had and now the stools are just right! Disclosure: Some of the links below are affiliate links. At no extra cost to you, I may earn a small commission on items bought using them. These are the same recommendations I would make regardless of any compensation.For products that I have older versions of, I recommend the items that I would replace them with if I were buying them new. These are the tools I used in this project. You do not need all of them, so feel free to substitute with tools you have available. There are more DIY projects in the works, so stay tuned to Uncharted DIY. Feel free to comment, post photos or ask questions about this project. In this active market, finding table legs that suit your needs and attaching them directly to a tabletop is easy, allowing you to learn the results quickly. However, pre-made table legs sometimes come in sizes that dont fit your specific requirements. Additionally, using table legs on uneven surfaces or for extended periods can cause damage. When this happens, it's time to learn "how to cut metal table legs". Below is an easy guide to help you get started. Lets dive in!Required Tools and MaterialsBefore learning how to cut metal table legs, we need to gather the following tools as well as materials:Angle grinderMetal cutting bladeSafety goggles and glovesMeasuring tapeMarker or chalkHow to Cut Metal Legs: Detailed GuideA guide on how to cut metal table legs at homeCredit: Arthon meekodong on Canva.comStep 1: Measure and Mark the Desired LengthThe desired length of each table leg depends on your specific needs and preferences. If you want to shorten all four legs to reduce the table height, you must measure and mark each leg to ensure they remain balanced. On the other hand, if your table legs are damaged due to long use or uneven surfaces, you may only need to measure and mark one to three legs accordingly.Use a measuring tape and a pencil to determine the length of each table leg. Ensure all legs are marked at the same height for the most stable result.Shoud Read: Maintenance and Cleaning Tips for Metal Table LegsStep 2: Secure the Table LegsBefore starting to cut the metal table legs, you need to secure them firmly to a workbench or a stable surface with clamps or vices. This step will ensure both stability and accuracy throughout the entire process.You can also place a towel on the floor and right under the table legs to easily clean any scratches immediately after finishing the process.Step 3: Safety Goggles and Gloves Are NeededIn every DIY project, we need to prioritize safety by wearing suitable protective gear. Lets put on the goggles to shield your eyes from sparks, flying debris, and wear gloves to avoid damage from sharp edges as well as metal shards.Step 4: Cut the Metal Legs with Your Angle GrinderFirstly, attach the metal cutting blade to your grinder. Dont forget to ensure it is securely fastened. Double-check that the blade is suitable for cutting metal. Switch on the grinder and position the blade against the marked line on the table legs. Apply firm and steady pressure as you guide the grinder along the line. Take breaks if the blade becomes too hot, allowing it to cool down before continuing.Step 5: Smooth Out the Rough EdgesWhen you finish cutting the metal legs, you can use a metal file or sandpaper to smooth out the sharp edges or rough surfaces on the newly cut ends. This is an important step to ensure safety and aesthetics of the table legs. A smooth cut end can also protect your floor from being damaged over time.Step 6: Adding Legs Tips or ProtectorsYou can easily find suitable tips or furniture leg protectors at nearby stores and attach them to the bottom of each table leg to prevent floor scratches. This will also ensure the safety of your furniture during daily activities, especially in homes with kids.Should read: How to Fix a Wobbly Table: A Simple GuideUseful Tips for Your DIY ProcessThings to notice when cutting metal table legs at homeCredit: Moskaliuk Sergii on Canva.comWhen learning how to cut metal chair legs, to avoid inhaling metal dust or fumes, you should work in a well-ventilated space.Long hair, loose clothing, bracelets, and excess fabric on gloves can get caught in the grinder. Please check carefully before operating the grinder.Ensure fire extinguishers are placed nearby to take prompt action in case of accidental sparks or fire.Clean the metal scraps immediately after finishing cutting the metal legs to prevent injuries or hazards.Other Ways to Cut Metal Table LegsBesides using an angle grinder, there are other methods to cut your metal legs to the desired height. Here are some of our recommendations that may suit you:Hacksaw: This is a great tool for those who want to learn how to cut metal legs on table and cut legs made of thin metal plates. For a smooth and precise result, secure the table legs with a jig, such as a mitre box.Saw with metal cutting blade: This method can be carried out similarly to using an angle grinder. Don't forget to smooth the cut ends and add some furniture legs protectors for a perfect finish.Circular saw: If you already have a circular saw, you can make use of it by using this tool to cut metal. However, be sure to measure the thickness of the metal table legs and choose the appropriate blade for a smooth cutting process.Explore other methods to cut metal furniture legs at home Shop now: 115 Yami Bench Legs; 118 Faras Bench LegsWith our specific instructions and useful tips, now you can confidently learn how to cut metal table legs" and start the project at home while maintaining safety and precision. Besides that, dont forget to prioritize safety, accuracy, and attention to detail for the best results. If you want to learn more about DIY projects, we offer hundreds of articles on the website. Lets dive into the world of creation by visiting the Blog - How to DIY section now.Related post: Most people don't realize how easy it is to cut their own metal table legs. With the right tools and a little know-how, anyone can do it! The first step is to gather your materials. You will need a saw with a metal-cutting blade, a measuring tape, a level, and a mark-er. You will also need a clamp or vise to hold the metal in place while you cut it. Next, measure the length of the table legs you need and mark the measurements on the metal with a marker. Make sure to double-check your measurements before you cut! Then, set up your saw and clamp or vise to hold the metal in place. Carefully cut along the line you marked, taking care not to cut too deeply or too shallow. Finally, use a file or sandpaper to smooth out any rough edges on your newly cut metal table legs. That's it! You're now ready to install your new legs and show off your handiwork! Most people don't realize how easy it is to cut their own metal table legs. With the right tools and a little know-how, anyone can do it! The first step is to gather your materials. You will need a saw with a metal-cutting blade, a measuring tape, a level, and a mark-er. You will also need a clamp or vise to hold the metal in place while you cut it. Next, measure the length of the table legs you need and mark the measurements on the metal with a marker. Make sure to double-check your measurements before you cut! Then, set up your saw and clamp or vise to hold the metal in place. Carefully cut along the line you marked, taking care not to cut too deeply or too shallow. Finally, use a file or sandpaper to smooth out any rough edges on your newly cut metal table legs. That's it! You're now ready to install your new legs and show off your handiwork!

How to make metal table legs. Metal furniture legs. How to cut furniture legs. How to cut metal legs. Can you cut metal chair legs. How to cut metal chair legs.

- <http://fatamorgana.fr/uploads/assets/file/85ceae6b-1848-4286-a54d-9846bec3fa0d.pdf>
- <https://damsindia.org/admin/uploads/file/wogovjopere-vetun-milekajo-nunufug.pdf>
- [zohuzutaza](#)
- [everyday use by alice walker pdf summary](#)
- [cuge](#)