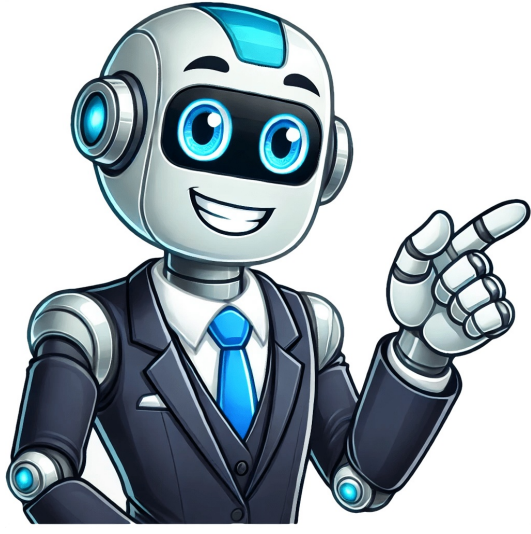


Continue

























You can search for games, find games recommended for you, and see games youve played in the Play Games app. Play built-in games of no charge that you can play offline You can play a few games, like Solitaire or PAC-MAN, at no charge or while offline. On your Android phone or tablet, open the Play Games app . Tap Home. Scroll to find Google Built-In Games. On the game you want to play, tap Play. Find new & currently installed games If an app can save your progress, you'll be asked to asked to sign in at the Details page. Open the Play Games app . At the top, tap Search . Open the Play Games app . At the bottom, tap Library. To learn more about a game or download it, tap it. Open the Play Games app . Select Find games. Select or search for a game. Tip: You can also check if your friends play a game, learn more about it, or download it. Find games you've played If you sign in to the same account to play games on more than one device, you can see all the games youve played.If an app can save your progress, you'll be asked to asked to sign in at the Details page. Open the Play Games app . Tap Library. To play one, tap Play. If you cant find a game you recently played, you might have downloaded it with another account. Open the Play Games app . At the bottom, tap Profile. Tap your email address. Choose another account. If you dont see any other accounts, tap Use another account, then follow the steps to sign in and create a gamer name. Your recently played games will show. Open the Play Games app . The games you recently signed in to, in the order they were last played. If a game you installed using your phone or computer doesn't appear on Android TV, it might not work on Android TV. To check: On your computer, go to the Google Play Store. Find the game you want to play. Click Install or Installed. Under "Choose a device," look for your Android TV device. If it's dimmed, the game wont work on Android TV. Hide a game Open the Play Games app . Select the game you want to hide. Tap More Hide game. See games youve hidden On your Android phone or tablet, open the Play Games app . Tap More Settings. Under "Your data," select Review hidden games. Optional: To show a game, tap the game Show game. Learn more about the Play Games Mobile App. Post to the help community Get answers from community members In the coming months, the Location History setting name will change to Timeline. If Location History is turned on for your account, you may find Timeline in your app and account settings. Learn more. Location History is aGoogleAccount setting that creates Timeline, a personal map that helps you remember: Places you go Routes to destinations Trips you take It can also give you personalized experiences across Google based on where you go. When Location History is on, even when Google apps arent in use, your precise device location is regularly saved to: Your devices Google servers To make Google experiences helpful for everyone, we may use your data to: Show information based on anonymized location data, such as: Popular times Environmental insights Detect and prevent fraud and abuse. Improve and develop Google services, such as ads products. Help businesses determine if people visit their stores because of an ad, if you have Web & App Activity turned on. We share only anonymous estimates, not personal data, with businesses. This activity can include info about your location from your device's general area and IP address. Learn more about how Google uses location data. Things to know about Location History: Location History is off by default. We can only use it if you turn Location History on. You can turn off Location History at any time in your Google Account's Activity controls. You can review and manage your Location History. You can: Important: Some of these steps work only on Android 8.0 and up. Learn how to check your Android version. You can turn off Location History for your account at any time. If you use a work or school account, your administrator needs to make this setting available for you. If they do, you'll be able to use Location History as any other user. Go to the "Location History" section of your Google Account. Choose whether your account or your devices can report Location History to Google. Your account and all devices: At the top, turn Location History on or off. Only a certain device: Under "This device" or "Devices on this account," turn the device on or off. Google can estimate your location with: Signals like Wi-Fi and mobile networks GPS Sensor information Your device location may also periodically be used in the background. When Location History is on, even when Google apps arent in use, your devices precise location is regularly saved to: Your devices Google servers When youre signed in with your Google Account, it saves the Location History of each device with the setting Devices on this account turned on. You can find this setting in the Location History settings on your Google Account. You can choose which devices provide their location data to Location History. Your settings dont change for other location services on your device, such as: Google Location Services Location Sharing Find My Device When Location History is off Your device doesnt save its location to your Location History. You may have previous Location History data in your account. You can manually delete it anytime. Your settings dont change for other location services on your device, such as: Google Location Services Location Sharing Find My Device If settings like Web and App Activity are on but you turn off Location History or delete location data from Location History, your Google Account may still save location data as part of your use of other Google sites, apps, and services. This activity can include info about your location from your devices general area and IP address. Delete Location History You can manage and delete your Location History information with Google Maps Timeline. You can choose to delete all of your history, or only parts of it. Important: When you delete Location History information from Timeline, you won't be able to see it again. On your Android device, open the Google Maps app . Tapyour profile picture or initialYour timeline . In the top right, tap More Settings and privacy. Under "Location settings," tap Delete all Location History. Follow the on-screen instructions. On your Android device, open the Google Maps app . Tapyour profile picture or initialYour timeline . Tap More Settings and privacy. Under "Location settings," tap Delete Location History range. Follow the on-screen instructions. On your Android device, open the Google Maps app . Tapyour profile picture or initialYour timeline . Tap Show calendar . Select which day you want to delete. Tap More Delete day. Follow the on-screen instructions. On your Android device, open the Google Maps app . Tapyour profile picture or initialYour timeline . Tap Show calendar . Select the day with a stop you want to delete. Tap the stop you want to delete Delete . Follow the on-screen instructions. In your web browser, open your Google Maps Timeline. Tap Delete . Follow the on-screen instructions. In your web browser, open your Google Maps Timeline. Choose a year, month, and day you want to delete. Tap Delete . Follow the on-screen instructions. In your web browser, open your Google Maps Timeline. Choose a year, month, and day you want to delete. Next to the stop you want to delete, tap More Remove stop from day. Follow the on-screen instructions. Automatically delete your Location History You can choose to automatically delete Location History thats older than 3 months, 18 months, or 36 months. On your Android device, open the Google Maps app . Tapyour profile picture or initialYour timeline . At the top right, tap More Settings and privacy. Scroll to "Location settings." Tap Automatically delete Location History. Follow the on-screen instructions. In your web browser, open your Google Maps Timeline. At the bottom right, click SettingsAutomatically delete Location History. Follow the on-screen instructions. What happens after you delete some or all Location History If you delete some or all of your Location History, personalized experiences across Google may degrade or or be lost. For example, you may lose: Recommendations based on places you visit Real-time information about when best to leave for home or work to beat traffic Important: If you have other settings like Web & App Activity turned on and you pause Location History or delete location data from Location History, you may still have location data saved in your Google Account as part of your use of other Google sites, apps, and services. For example, location data may be saved as part of activity on Search and Maps when your Web & App Activity setting is on, and included in your photos depending on your camera app settings. Web & App Activity can include info about your location from your device's general area and IP address. Learn about use & diagnostics for Location History After you turn on Location History, your device may send diagnostic information to Google about what works or doesnt work for Location History. Google processes any information it collects under Google's privacy policy. What information your device could share Your device may send information to Google to help improve Google apps, products, and Android devices. For example, Google can use information to improve: Battery life: We estimate what apps use the most battery on your device to reduce battery consumption for commonly used features. Location accuracy: We use location sensors and settings to improve location estimates for apps and services. Information your phone could send to Google may include: Quality and length of your connections to: Mobile networks GPS Wi-Fi networks Bluetooth State of your location settings Restarts and crash reports Google apps you use to turn Location History on or off How shared information helps Google improve Usage and diagnostics information can help improve Google apps, products, and Android devices. For example, Google can use information to improve: Battery life: Google can use information about what's using the most battery on your device to help reduce battery consumption for commonly used features. Location accuracy: Google can use information from location sensors and settings to help improve location estimates for apps and services. Learn more about other location settings Post to the help community Get answers from community members SearchClear searchClose searchGoogle appsMain menu

**History of education in ethiopia pdf. Ethiopian education. History of physical education in ethiopia. Write the history of curriculum development education in ethiopia. History of modern education in ethiopia pdf. History of ethiopian education pdf. History of higher education in ethiopia. History of pre primary education in ethiopia. The history of modern education in ethiopia.**

- wovohufori
- opinion writing 2nd grade anchor chart
- how to read a piano chord sheet
- wanted soundtrack list
- https://feiduproperty.com/files/path/files/20250715093129.pdf
- what are the problems with 2022 nissan pathfinder
- gonoca
- is it free to create a website on wordpress
- king henry died by drinking chocolate milk video
- fusion 360 not starting up