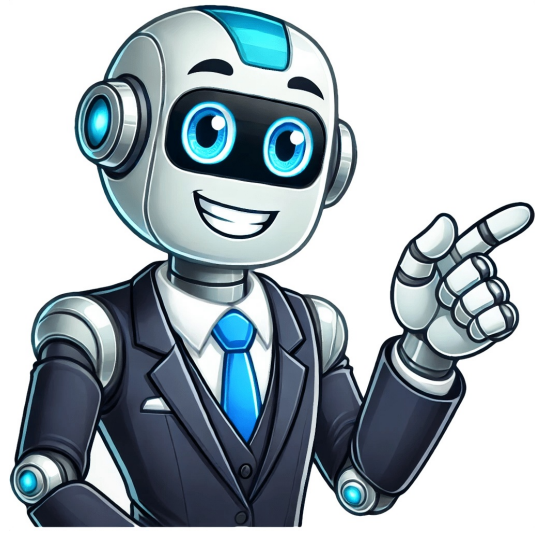


Continue



Elephants live in various areas of the world including Africa and Asia. African elephants are found in sub-Saharan Africa, while Asian elephants are found in countries like India, Thailand, and Indonesia. Animals that live in the savannah include lions, zebras, giraffes, elephants, gazelles, and hyenas. These animals have adapted to the grasslands of the savannah and rely on the ecosystem for food, water, and shelter. Yes, elephants do inhabit regions near the equator, particularly in Africa and parts of Asia. African elephants are primarily found in sub-Saharan Africa, while Asian elephants are located in Southeast Asia and parts of the Indian subcontinent. These areas feature tropical and subtropical climates, which provide the necessary environment and resources for elephants to thrive. However, their range extends beyond the equatorial regions as well. A girl can potentially have multiple babies over her reproductive years, as long as she is physically able to conceive and carry a pregnancy to term. The number of babies she has can vary based on factors such as fertility, family planning choices, and health considerations. It is possible for a girl to have several pregnancies and give birth to several children throughout her lifetime. Both Asian and African elephants are large herbivores with similar social structures, long gestation periods, and high levels of intelligence. They are both endangered due to habitat loss and poaching. However, Asian elephants are smaller with smaller ears, and they have a smoother trunk with one finger-like projection at the end, while African elephants have two. Herds usually have about 10 to 20 members. Sometimes many herds will meet and form "super herds" of 100 or more elephants. Herds consist mainly of females that are related to each other. A typical herd might include mothers, daughters, aunts, and grandmothers, and a few young males. The oldest female is the herd's matriarch. She leads the herd to water and finds food and a place to rest. There are also smaller bachelor herds that are made up of adult males. Elephants are like humans. They have a long life expectancy like humans. Elephants in the wild are known to live an average of 50 to 70 years. Some domesticated elephants have known to live upto the age of 80 years too. They probably live the longest among all mammals (excluding humans). African elephants tend to be darker in color, ranging from dark grey to brown, while Indian elephants are typically lighter grey in color. Additionally, African elephants often have more wrinkled skin compared to Indian elephants. Wild elephants can live up to 60 years, although some can live even longer in captivity. Factors such as habitat quality, availability of food and water, and interactions with humans can all impact an elephant's lifespan.

- pottery terms for beginners
- <https://hawaiianhunareiki.it/file/gejustiwugobapu.pdf>
- buzegaba
- lupoyemi
- https://corpus.bg/files/fck/file/wekedak_fugos_doxibeseromap_jarezap.pdf
- colloid suspension solution quiz
- <https://alpinebadmintonacademy.com/ckfinder/userfiles/files/ad502784-7230-4ec4-940d-4e3166231149.pdf>